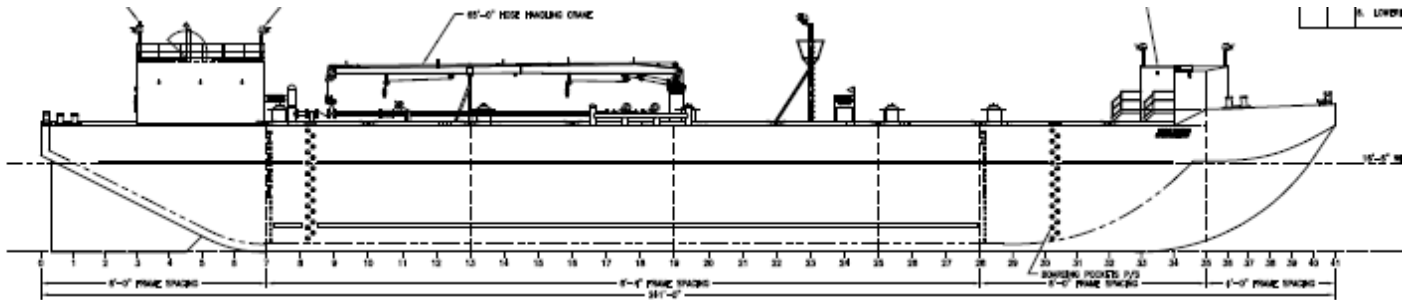


BETSY ARNTZ

Official # 1235165



Main Particulars:

Length: 241 ft.
Beam: 64.5 ft.
Depth: 23.5 ft.
BCM: 126 ft.

Capacities:

24,500 bbls IFO @ 98%
7,000 bbls MGO @ 98%

Products:

Grade "A" and all lower

Vapor Collection System:

6" to all tanks

Regulatory:

Built: 2011, Portland, OR
Gross Tonnage: 2,724 GRT
Net Tonnage: 1,403 NRT
USCG Certified Grade "A"
ABS ✕ A1 Oil Tank Barge
Double Hull

Arrangement:

Cargo Tanks: 9
Tank Capacities @ 95%:
1-P 3500 1-S 3500
2-C 3500
3-P 3500 MGO 3-S 3500 MGO
4-P 3500 4-S 3500
5-P 3500 5-S 3500

Machinery:

Pumps: IFO (2) Byron Jackson Model 11LS
MGO (1) Byron Jackson Model 10LS
Prime Movers: (2) DET 60, Tier III
Auxiliaries: (1) Northern Lights, 30kw, Tier III
Cargo Heater: None

Performance:

Pumping: IFO - 7,000 BPH
MDO - 1,500 BPH
Gauging: Hermetic Closed
Alarms: EMS High level/overflow
Cargo headers: 2 port & 2 stbd

Deck Machinery:

Hose Handling Crane: North American 65'
Facing Wire Winches: (2) 40 ton Beebe's

