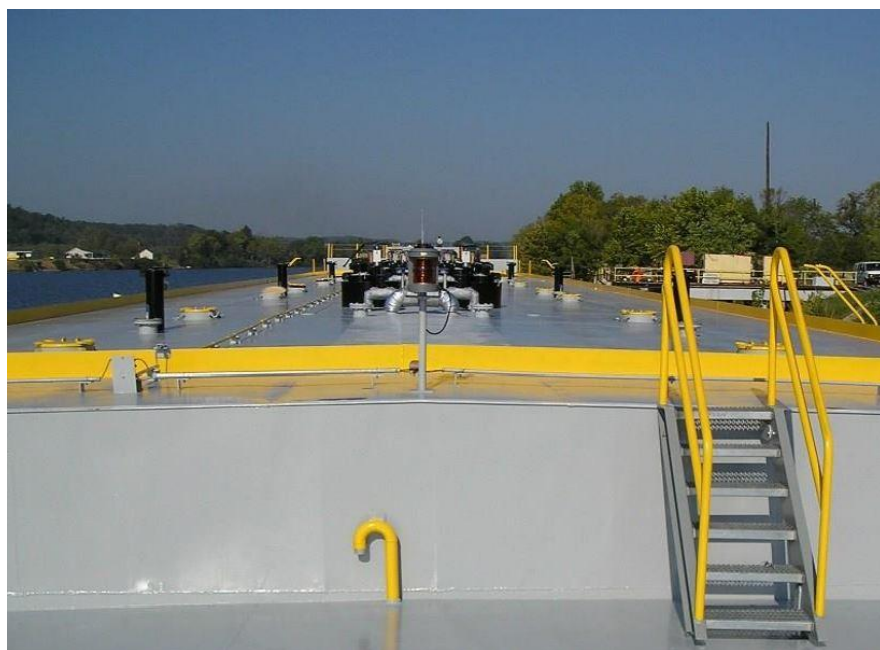


LONE STAR



OFFICIAL #:

1254249



**239 Lakeside Dr.
Channelview, TX 77530**

www.harleymarine.com



MAIN PARTICULARS:

Built:	2014
Builder:	Amelia, LA - Conrad Shipyards
Class:	N/A

DIMENSIONS:

Gross Tonnage:	1,754 GRT
Net Tonnage:	1,619 NRT
Length:	297.5 ft.
Length Overall (LOA):	N/A
Beam:	54 ft.
Depth:	12 ft.
Loadline Draft:	N/A
Air Draft:	26 ft.

CAPACITIES:

Cargo Type(s):	Dirty
Total Cargo:	30,000 bbls. @ 100%
Tons Per Inch:	N/A
Stripping System:	

MACHINERY:

Pumps:	(2) Byron Jackson 12LS 16GHC 3 Stage
Pump Engines:	(2) Cummins 6CTA 8.3-D
Auxillaries:	N/A
Connection System:	N/A
Inert Gas System:	N/A
Cargo Heater:	Heatec 3.5MM BTU

PERFORMANCE:

Pumping:	3500.00 bbls/hr
Gauging:	Open or Closed Hermetic
Alarms:	Bergan Guard Level Elec. Alarms
Cargo Header:	1 Port/1 Stbd; 10 in.
Vapor Header:	1 Port/1 Stbd; 8 in.

DECK MACHINERY:

Deck Crane:	(2) Hose Derricks
Deck Winches:	N/A
Anchor:	N/A

TANK ARRANGEMENT:

BCM:	N/A
BVM:	N/A
SCM:	N/A
Number of Tanks:	6
Segregation(s):	N/A

CARGO TANK CONFIG. @ 94.5%

Tank #	Port	Center	Starboard
1	5,194		5,194
2	5,174		5,152
3	4,374		4,346
4			
5			
6			